

PHOTOGRAPHY

Prizes: 1st, £3.00; 2nd, £2.00; 3rd, £1.00 unless otherwise stated.

Entry Fee: 50p

ALL PHOTOGRAPHS MUST BE MOUNTED AND NOT EXCEED 8" X 6" INCLUDING MOUNTS

Aspire Accounting., Chartered Accountants, Barnard Castle has kindly sponsored

Classes 231-238 inclusive

229a. ONE SNAPSHOT WITH AN AGRICULTURAL, MACHINERY THEME

229b. ONE SNAPSHOT WITH AN AGRICULTURAL, LIVESTOCK THEME

230. ONE SNAPSHOT OF AN ANIMAL OR ANIMALS prizes kindly donated by

Mrs. E. Swann

231. ONE WILDLIFE SNAPSHOT

232. ONE SNAPSHOT OF A CHILD OR CHILDREN

233. ONE LANDSCAPE SNAPSHOT

234. ONE SUNSET/SUNRISE SNAPSHOT

235. ONE BLACK AND WHITE SNAPSHOT

236. ONE BOTANICAL SNAPSHOT

237. ONE SNAPSHOT OF WATER

238. ONE SNOW SCENE SNAPSHOT

239. ONE HUMEROUS SNAPSHOT WITH CAPTION

240. ONE SCENIC SNAPSHOT, to be taken of a scene within the Parishes of Bowes and Gilmonby for seniors (over 16 on Show Day). **The Bowes 800 committee** has kindly donated a perpetual challenge cup, to be held for one year only.

241. ONE SCENIC SNAPSHOT to be taken of a scene within the Parishes of Bowes and Gilmonby, for juniors (16 years and under on Show Day). **The Bowes 800 committee** have kindly donated a perpetual challenge cup, to be held for one year only.

242. YOUR FAVOURITE SNAPSHOT taken by a child 18 years and under on Show Day, age considered.

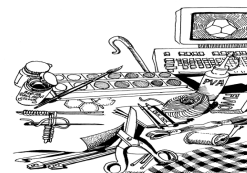
The D & E Swann Cup to be awarded for the **BEST PHOTOGRAPH** in the show, to be held for one year only.

The Holden Challenge Cup, to be held for one year only, will be awarded for the **MOST POINTS** in the photography section 1st, 3 points; 2nd, 2 points, 3rd, 1 point.

HANDICRAFTS

Prizes: 1st, £3.00; 2nd, £2.00; 3rd, £1.00 unless otherwise stated

Entry Fee: 50p



243. HOME SEWN ARTICLE to include cushions, quilting, etc.

244. HAND KNITTED ARTICLE Prizes kindly given by Teesdale Alpacas

245. CROCHET ITEM, any medium, to include wool, lace etc. Prizes kindly given by Mrs. S. Bayles

246. EMBROIDERY, any medium to include counted thread. Prizes kindly given in memory of Dee Massey.

247. BABY HAT Exhibits will be collected and sent to benefit premature babies at a local special care baby unit. Prizes kindly given by Teesdale Alpacas.

Pattern: With No 9 needles and DK wool cast on 60(70)sts.

Work 6 rows K1P1 rib. Change to No 8 needles and work in stocking stich for 9cm.

Decrease: 1st row: k6(7) K2tog, repeat to end. 2nd and alternate rows: purl

3rd row: K5(6) K2 tog, repeat to end; 5th row: K4(5) K2 tog, repeat to end. Continue decreasing thus until 12 sts remain(approx). Work 1 row. Break yarn and thread through remaining sts.

Sew up seam as flat as possible using running stitch.

248. AN ITEM FROM NEEDLE FELT Prizes kindly given by Mrs. A. Hughes

249. HANDMADE GREETINGS CARD Prizes kindly given by Mrs. A. Hughes

250. A HOMEMADE GIFT

251. A HOMEMADE GREETINGS CARD for children aged 18 years and under on Show Day, age considered

252. HOMEMADE ITEM INCORPORATING WOOL IN ANY FORM for children aged 18 years and under on Show Day, age considered. Prizes kindly given by Teesdale Alpacas.

The Linda Luck Trophy will be awarded for the **BEST EXHIBIT** in Classes 251 and 252.

Bowes W.I. Perpetual Cup, to be held for one year only, for the **BEST EXHIBIT** in the handcraft section, together with a special prize of £5.00 given by the Society.

S. Bayles Cup to be held for one year only will be awarded on a points basis: 1st, 3 points; 2nd, 2 points; 3rd, 1 point for classes 243-252 inclusive and a special prize of £2.00

ADULT ART & CRAFT

Prizes: 1st, £3.00; 2nd, £2.00; 3rd, £1.00 unless otherwise stated.

Entry Fee: 50p

PLEASE STATE SIZE OF EXHIBITS ON ENTRY FORM

253a. ART watercolours

253b. ART pencil drawing, prizes kindly donated.

253c. ART oil painting, prizes kindly donated.

253d. ART any other medium, prizes kindly donated.

254. CRAFT including restored items. A rosebowl given in memory of the late Mr. F. Bradley

254b. DECORATED STONE

255a. ADULT STRESS RELIEVING COLOURING template of your own choice.

255b. A PIECE OF HANDWRITING

The Man In The Glass

When you get what you want in your struggle for self,
And the world makes you king for a day,
Then go to the mirror and look at yourself,
And see what the man has to say.
For it isn't a man's father, mother or wife,
Whose judgement upon him must pass,
The fellow whose verdict counts most in life,
Is the man staring back from the glass.
He's the fellow to please, never mind all the rest,
For he's with you clear to the end,
And you've passed your most dangerous, difficult test,
If the man in the glass is your friend.
You can fool the whole world down the pathway of years,
And get pats on the back as you pass,
But the final reward will be heartache and tears,
If you've cheated the man in the glass.

Peter Dale Wimbrow Sr

The Midland Bank Challenge Cup, to be held for one year only, will be awarded for the **BEST EXHIBIT** in the adult art & craft section